

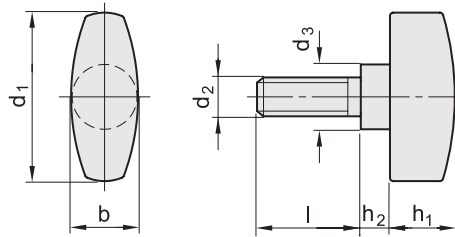
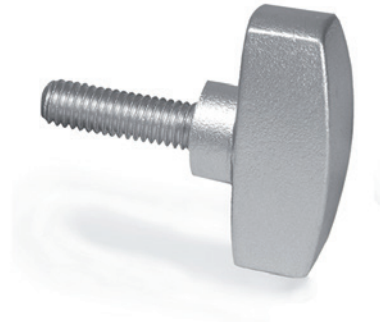
- 1
- 2
- 3
- 4
- 5
- 6
- 7
- 8
- 9
- 10
- 11
- 12
- 13
- 14
- 15
- 16
- 17
- 18
- 19

STANDARD EXECUTIONS

Cast AISI 316 stainless steel, sandblasted matte finish.

FEATURES AND APPLICATIONS

These wing knobs allow high tightening torque values and a comfortable grip, thanks to the elongated hub.



Code	Description	d1	d2	d3	b	h1	h2	l	⚖
GN.29151	GN 433-A4-20-M4-6-MT	20	M 4	8	9	8	3.5	6	18
GN.29152	GN 433-A4-20-M4-10-MT	20	M 4	8	9	8	3.5	10	19
GN.42361	GN 433-A4-26-M4-12-MT	26	M 4	10	11	10	4.5	12	21
GN.42362	GN 433-A4-26-M4-16-MT	26	M 4	10	11	10	4.5	16	22
GN.29154	GN 433-A4-26-M5-10-MT	26	M 5	10	11	10	4.5	10	20
GN.42371	GN 433-A4-26-M5-12-MT	26	M 5	10	11	10	4.5	12	26
GN.29155	GN 433-A4-26-M5-16-MT	26	M 5	10	11	10	4.5	16	23
GN.42381	GN 433-A4-26-M6-12-MT	26	M 6	10	11	10	4.5	12	28
GN.29157	GN 433-A4-26-M6-16-MT	26	M 6	10	11	10	4.5	16	24
GN.29158	GN 433-A4-26-M6-20-MT	26	M 6	10	11	10	4.5	20	24
GN.29159	GN 433-A4-26-M6-25-MT	26	M 6	10	11	10	4.5	25	25
GN.29161	GN 433-A4-34-M6-16-MT	34	M 6	12	13	12	5	16	39
GN.29162	GN 433-A4-34-M6-20-MT	34	M 6	12	13	12	5	20	41
GN.29163	GN 433-A4-34-M6-25-MT	34	M 6	12	13	12	5	25	42
GN.29164	GN 433-A4-34-M6-30-MT	34	M 6	12	13	12	5	30	44
GN.29166	GN 433-A4-34-M8-16-MT	34	M 8	12	13	12	5	16	42
GN.29167	GN 433-A4-34-M8-20-MT	34	M 8	12	13	12	5	20	43
GN.29168	GN 433-A4-34-M8-25-MT	34	M 8	12	13	12	5	25	45
GN.29169	GN 433-A4-34-M8-30-MT	34	M 8	12	13	12	5	30	48

Clamping elements